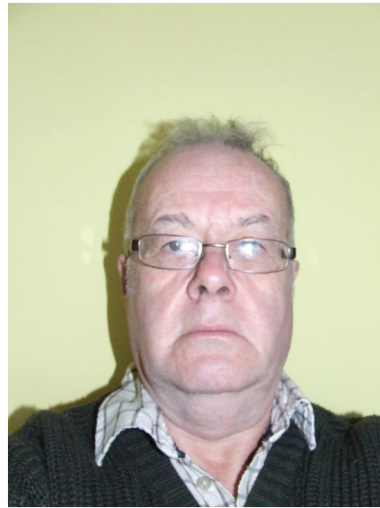


New Parish Councillors



John Hoddy – Profile

I was born in Oldham, Greater Manchester, in 1952. After graduating with a degree in Physics from the University of Oxford, I moved to Swadlincote in 1974 when I started work for the NCB at the MRDE Labs at Bretby, leaving in 1994 when the industry was in steep decline.

I am married with 2 step-sons and 2 grand-daughters. After living in Belper for a few years, my wife and I moved into Brizlincote in 2008.



Colin Wileman – Profile

I have lived in Brizlincote for the past ten years. I became an East Staffordshire Borough Councillor in May 2015 and joined Brizlincote Parish Council in January 2016.

I have many hobbies including running, photography, wildlife and walking.

Brizlincote Parish Councillors' Contact Details

Paul Presley-Brooks	07977227238	Arthur Goldstraw	01283 567974	Marie Andrews	01283 543238
Brian Judd	01283 522052	Ruth Goldstraw	01283 567974	John Hoddy	07597 116390
Bob Bidgood	01283 511788	Vera John	01283 542008	Colin Wileman	07572 685740
Adrian Cowan	01283 530472	Rob Ludford-Brooks	01283 535254	Barbara Roe (Clerk)	01283 814648

ESBC & Staffordshire CC Councillors' Contact Details

Bernard Peters	01283 740404	bernard.peters@eaststaffsbc.gov.uk
Colin Wileman	01283 529281	colin.wileman@eaststaffsbc.gov.uk
Conor Wileman	07907 182477	conor.wileman@staffordshire.gov.uk

Burton Member of Parliament Contact Details

Andrew Griffiths	01283 564934	andrew@andrewgriffiths.org.uk
------------------	--------------	-------------------------------

Brizlincote Parish Council meetings are held on the third Thursday of each month, at the Violet Way Academy and Nursery with a 7.00 pm start.

Can We Have Your Feedback Please?

Contact Barbara Roe, Clerk, Brizlincote Parish Council;
email clerk@brizlincote-pc.org.uk
tel: 01283 814648
web: www.brizlincote-pc.org.uk.

Editorial Committee

Paul Presley-Brookes Barbara Roe Adrian Cowan
Bob Bidgood

Printed by Reflex Print Solutions, Paget Street, Burton on Trent.
www.reflexprint.com



Brizlincote Parish Council Newsletter

Issue 21 March 2016

BRIZLINCOTE IN BLOOM.

The judging this year will take place on June 25th with the same criteria and categories as before – Best Front Garden, Best Rear Garden, Best Improvisation of a Sloping Garden, Best Floral Display. It is hoped we will have an even more brilliant display this year due to the earlier judging date.

To embellish this, it has been decided to enter the Parish into the Heart of England in Bloom competition, competing with the likes of Winhill etc. and for this we would welcome as many volunteers and ideas as possible to help in this competition and also improve the overall appearance of the area in which we all live. Judging date for this event is to be decided but will take place around the same date as Brizlincote in Bloom.

We have been afforded the assistance of the local Greenhouse Centre based at the Stapenhill Cemetery, so please let us all become involved and show just how proud we are of the area we live in.

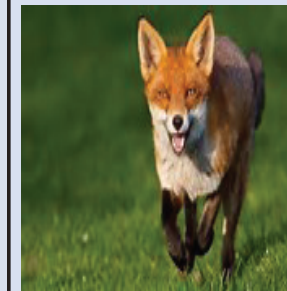
Ideas already for the scheme are a wild flower display in various areas, the local shops and businesses to become involved (hanging baskets etc) the local allotment society could help plus anyone with a couple of hours to donate to this cause.

BRIZLINCOTE PARISH COUNCIL ANNUAL PARISH MEETING.

The Annual Parish Meeting is to be held on Thursday 28th April 2016

It will take place at the Violet Way Academy and Nursery in the ITC Room at the back of the School commencing at 19.00 and is open to all members of the Parish.

WILDLIFE SURVEY.



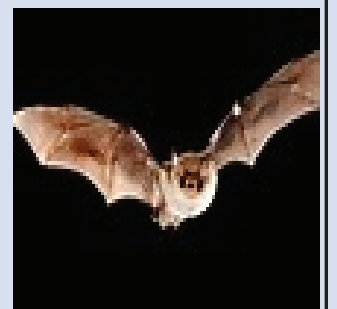
The Parish Council would like to take a summer snapshot of the wildlife, birds, bats, mice, rats, foxes etc. seen in Brizlincote during June, an exercise that hopefully can be completed again in the summer of 2017. Your help and contributions would be appreciated by completing a simple table, as indicated in the example, to show the type of animal and number of times seen between 1st and 30th June 2016.

Example Table.

Animal	Number seen
Pig	1
Flying goat	1
blackbird	2
And so on	

Why are we doing this?

Because we thought it might be interesting, maybe children or grandchildren could be dragged from their tablet or phone too! Wouldn't it be great if you spot some unusual birds.



County Councillor Update From Conor Wileman.



Beaufort Road/ Hargate Road bend

There have been four accidents on this bend in quick succession recently and whilst no one has been seriously injured it is a matter of time before something more serious happens. Larger more visible signs were put in place to alert drivers to the bend but that has not been enough to deter speeding drivers. At the last Brizlincote Parish Council meeting we had a full discussion on the options available. I welcome residents voicing their ideas to me on how we can make the bend safer and I have a meeting with the highways team on Monday 11th April to put forward proposals. Projects like this normally take between 6-9 months and involve detailed plans/ consultation and delivery. Working with the Parish Council we are also considering the use of permanent electronic LED signs that flash at speeding drivers- this is something we can potentially deliver in the short term.

Violet Way parking

I'm pleased to update that a pick up and drop off zone outside Violet Way School has gone out to consultation and subject to consultation will be delivered in the summer holidays, 2016. As part of the plans this will also include no waiting times on Marston Rise; an increase in double yellow lines over the brow of hill on Violet Way where it is currently dangerous for drivers and children walking home from school and double yellow lines at the entrance of Foxglove Avenue. Of course this is no silver bullet, but it gives parents the option of an area to park off the road which is safer for children and for drivers and with time it should become one of the ways to ease the parking problems in the cul-de-sacs in the vicinity.

Road defects

Just this week the Government are granting the County Council £1,069,000 to repair road defects and a large proportion of that will be spent in Burton. However, there is no question that our roads in Burton need some serious improvement. In Brizlincote however, the roads are holding up well and I would encourage anyone who sees a pothole or any such road defect in Brizlincote to report it to 0300 111 8000 or to report it through the County Council's website. Please take note of the reference number and if the road defect isn't repaired in a timely manner, email me at conor.wileman@staffordshire.gov.uk or ring my mobile on 07907182477. I assure you that I am out there on 'pothole duty' and so I should be as your Councillor.

Finally I'm happy to discuss any issue with you. It's a great area to live in and I would love to hear any ideas for Brizlincote that people have.

Best Wishes

Conor.

Chairman's message



Your Parish Newsletter is about to change, hopefully for the better, and be more informative and friendly, rather than the existing mode we have had for a number of years. This is not to demean the previous editions, but the time is now right to move forward.

It is proposed to invite advertisements from members within the Parish who wish to sell, donate, swap items that they may have lurking in a dark corner. These adverts will be FREE. Adverts may be sent via email to our Parish Clerk at clerk@brizlincote-pc.org.uk

We are also going to invite business advertisements within the Newsletter for a nominal charge, with any profits going to a fund to be passed on to a LOCAL charity either at Christmas or the end of our fiscal year.

In each of the Newsletters a local member or organisation will be invited to contribute with their thoughts and up to date information. The first of these is actually featured in this Newsletter and is by our County Councillor Conor Wileman.

Two new Councillors have joined us and this now makes the Parish Council a 100% complete. I would like to welcome Colin Wileman and John Hoddy to the Council. Their details can be found on the back page of this Newsletter.

NEWSLETTER

As a thought, you may think that the distribution of the Newsletter to some 2000 homes happens as if by magic, yet we have a few volunteers plus the effort of your local Parish Councillors who deliver the Newsletter through your letterbox. We are seeking more volunteers to help reduce the load on the generous people who do actually volunteer at present and a big thank you goes out to all. TO VOLUNTEER SIMPLY CONTACT THE PARISH CLERK OR ATTEND A PARISH MEETING, we don't bite and you may just enjoy.

Should you have any further ideas to make our Newsletter more interesting or if you have an article you feel is of interest please submit your ideas, we always welcome these. It could be contacts for the local doctors, dentist, W.I, cubs, scouts, brownies and functions they may be holding. This idea came from Susan Jolley, one of our Parishioners and also a volunteer Newsletter distributor.

WE ARE A PARISH NEWSLETTER AND WISH TO PROMOTE THE PARISH TO ITS BEST, PLEASE SUPPORT.

Many thanks for your kind attention

Chairman Paul Presley-Brooks